

CLAUSE about the Vth International Biennale of young architects “Leonardo 2013 Award”

1. GENERAL INFORMATION

The founder and organizer of the Vth Minsk international biennale of young architects “Leonardo 2013” (further The Biennale) is the Belarusian Union of Architects (BUA). The Biennale is held under the auspices and with the support of Ministry of Architecture and Construction of Republic of Belarus, Ministry of Culture of Republic of Belarus, Minsk Executive Committee, International Union of Architects (UIA) and International Association of Unions of Architects (IAUA). The Biennale is organized within the framework of the Xth National festival of architecture “Minsk 2013” aiming to make young architects’ works of the last three years known to the wide society and foreign colleagues; to appoint best works and authors; to reveal future outlooks and trends of architecture; to popularize creative achievements of young architects.

Architects of the age under 40 have the right to participate in the Biennale.

Architectural works made in the process of the professional activity (not student ones) and having been not exposed at the previous “LEONARDO” competitions can participate in the Biennale.

The amount of works by one author or authors group is unlimited.

The Biennale is held in 3 stages:

Stage 1: May 15 – August 1: time for providing digital copies of works to be appraised by the authoritative international jury. Architectural works are to be sent to: leonardo2013@tut.by.

Stage 2: August 15 –16: the international jury decides the winner in each nomination in 2 competition sections “Constructions” and “Projects”.

Stage 3: September 25 – 28: Exposition of all works participated in the Biennale, declaring the winners, awards ceremony. A month before, all winners will receive invitations to spend the time in Minsk at the cost of the Biennale organizers (accommodations, meals, entertainment).

Architectural works created at a high professional level, bearing the social value, with high esthetic & artistic, engineering and economic features may be recognized as the best ones.

The best entries exposed at the Biennale will be awarded with the Vth International Biennale of young architects “Leonardo 2013” Awards.

The participation in the Biennale is free of charge.

2. COMPETITION SECTIONS AND NOMINATIONS

Biennale entries will be presented in two sections: “Projects” and “Constructions”.

The objects built and put into operation in 2010–2013 will be united in the “Constructions” Section.

Projects, project proposals, author's conceptions will be involved into the "Projects" Section

Principal nominations are set up in each Section:

1. Town planning and designing;
2. Social and industrial complexes, buildings and establishments;
3. High-storied living houses;
4. One-apartment and low-storied living houses (1 to 3 floors);
5. Landscape architecture, city design and monumental art and sculpture in the architecture;
6. Interior;
7. Architectural solutions using roller shutter systems in residential, public and industrial buildings (s. Annex D).

3. PRIZES FOR WINNERS

The winners of the Biennale will be rewarded with the following prizes:

The best work in the "Constructions" competition section – with the Major Grand Prix, Biennale Medal, Biennale Diploma and 1500 \$ purse;

The best work in the "Projects" competitions section – with the Minor Grand Prix, Biennale Medal, Biennale Diploma and 1000 \$ purse;

The winner of each nomination – with the Biennale Medal and Diploma;

The winner in the nomination "Architectural solutions using roller shutter systems in residential, public and industrial buildings" in the "Project" section receives from the Biennale partner, ALUTECH Group of companies, a trip to one of the European culture capitals (London, Paris, Amsterdam, Vienna, Berlin, Rome, Milan, Prague, Stockholm) for 2 persons, including air travel, accommodation for 3 nights in the 4 stars hotel, excursions program by agreement.

In case the jury introduces the second place in a nomination, the second-prize winners will be rewarded with the Biennale diploma;

Besides "Leonardo 2013 Award" Diplomas, works will also be rewarded with UIA, IAUA and BUA Diplomas and valuable prizes.

4. JURY

The Jury of the Competition is made up of 7 members and established by board of directors of BUA.

The Chairman of the Jury is to be elected by the Jury members. The jury includes representative persons of the UIA, well-known foreign architects and leading architects of the Republic of Belarus.

The Jury members visit the Biennale two times: first time to determine the winners in all nominations and sections; second time to announce the Biennale results, present the awards, diplomas and medals.

The Jury members are not allowed to participate in the Biennale. The decisions made by the jury are validated in a report with signatures of all jury members who took part in the session. The decisions made by not less than 5 present jury members are considered to be valid. If the votes are divided equally, the Chairman has the voting.

5. REGISTRATION OF PARTICIPATION

In order to participate in the competition the managing representative of the authors' group should:

1. Send filled-in registration form for each object (s. annex A) to leonardo2013@tut.by till August, the 1st 2013.
2. Send the digital copy of the work in JPEG or TIFF format (70x100 cm panel, resolution at least 100 dpi) to leonardo2013@tut.by till August the 1st 2013. If possible, it is also necessary to attach separately the main images in the same format based on the A4 size (297x210 mm).
3. Deliver to the exposition (or transfer cash assets for printing) the panels made of foam board (plastic) or posters arranged according to the Regulations in PO BUA to the address: K. Marx St., 14, 220030 Minsk Republic of BELARUS, Tel. /fax: (+ 375 17) 327 71 20 till September, the 15th 2013.

6. ARRANGEMENT OF COMPETITION'S OBJECTS

The Competition's objects are to be presented by the author or by the managing representative of the authors' group. The materials are to be submitted on the panels made of foam cardboard (plastic) or on the posters of 1000(h) × 700(l) mm. The panels or posters must have any holes or another system for suspending in the upper part. One competition project should be arranged on one or two panels and presented in accordance with the scheme of arrangement of an object (see Annex B). Works may be presented in any convenient form (photos, drafts, etc.). If a model is presented it is to be exposed together with a supplement; the size of the model is not regulated. The object is to be presented as full as possible (plans on a readable scale, master plan (situation plan), facades (lofts), generic illustration (photos), technical & economic features, etc.) and is to occupy a separate panel.

Information about the object is to be placed, according to the scheme, on the upper side of the panel No 1 in the field 100mm high. It is necessary to indicate the contestant's participation degree in each project (an author, a co-author, a member of the authors' group and etc.), the authors' group, and also the organization, which fulfilled the project. An appropriate square, indicating "section" and "nomination" of the project is to be located on the right upper side. A colored square 40x40mm points out a nomination of the competition:

1. Dark blue – Town-planning and designing;
2. Red – Social and industrial complexes, buildings and establishments;
3. Orange – Living high-storied houses;
4. Yellow – Living one-apartment and low-storied houses;
5. Green – Landscape architecture, city design and monumental art and sculpture in the architecture;
6. Grey – Interiors;
7. Brown – Architectural solutions using roller shutter systems in residential, public and industrial buildings (s. Annex D).

Black contour around a colored square 10mm thick points out “Construction” Section, lack of it – “Project” Section.

The entries not satisfying the given requirements will be exhibited but will not be considered by the jury.

The exposition dismantling will be carried out by the competition participants’ efforts.

7. CATALOGUE

On the results of the Biennale a catalogue of the winners’ and participants’ works is to be issued.

The catalogue will be published according to the digital material sent in advance.

Publication in the catalogue is free of charge.

8. CONTACT

Address: 14 Karla Marksa St., Minsk 220030, Republic of BELARUS, Tel. /fax: (+ 375 17) 327 71 20, leonardo2013@tut.by. Additional information: www.bsa.by.

Annexes:


- A. Registration form
- B. Scheme of arrangement
- C. Production of panel (poster).

**PARTICIPANT REGISTRATION FORM
for the Vth Minsk International Biennale
of young architects
“LEONARDO 2013 AWARD”**

1	Section (Construction/Project)	
2	Nomination (title)	
3	Name of the object	
4	Location of the object (Country, city, street)	
5	Participating author (s)	
6	Authors' group members	
7	Project enterprise	
8	Project enterprise address	
9	Project's stage (for «project» section)	
10	Year and month of the object's putting into operation (for “construction” section)	
11	Number of panels for the object (h×L) 1000x700	
12	The need for making a poster (panel)	
13	Receipt	<p>I, ____ (name and surname) _____ am the managing representative of the author's group and apply with the project for the participation at the “Leonardo 2013” Biennale. My contacts: _____ (mob.), _____ (tel.), _____ (e-mail).</p> <p>Signature _____ / _____ /</p>
14	Registration form received by	<p>Managing representative of PO “BUA” ____ (Name) _____ Date 2013</p>

Registration form is to be sent to email: leonardo2013@tut.by till August 1st 2013
Additional information is available here: www.bsa.by .

SCHEME OF ARRANGEMENT

<p>Name and location of the object: Project's stage: Project enterprise, Author(s) participating at the Biennale, Author/ Authors' group members: Year and month (of the object's putting into operation/ of the project's issuing):</p>	
<p>Suggested drafts' and photographs' composition on the panel:</p> <ol style="list-style-type: none">1. Perspectives (photographic sketch before and after construction)2. Master plan3. Plans4. Elevations5. Sections and details6. Explanatory notes and Technical&Economical Indexes	

*** If you do not act in accordance with Annex C, please send produced posters (panels) with representative persons of your country, visiting the "Leonardo 2013", because with postal parcels may have customs problems.

The Biennale Organizing Committee can produce exhibition materials (panels, posters) of the e-mailed projects, if the participant has paid the expenses. For this you have to:

- indicate in the registration form (Annex A, p. 12) that you need a panel (poster) to be produced.
- pay 30 euro to the account of the Belarusian Union of Architects (BUA) till September 15, 2013.

If you have any questions concerning the payment, contact the Secretariat of the BUA:
14 Karl Marx str., 220030 Minsk, Republic of Belarus, tel/fax +375 (17) 327 71 20, or by e-mail:
leonardo2013@tut.by

**Information for money transfer
to branch № 527 Belinvestbank**

EUR

Correspondent bank	Deutsche Bank AG Frankfurt, S.W.I.F.T. code DEUTDEFF
Account № in correspondent bank	949 817 110
Recipient's bank	Belinvestbank, 527 branch, 16 Lenina str., Minsk, Belarus, code 739 S.W.I.F.T. code BLBBY2X.
Recipient	Account № 301 570 257 5125 Name of the organization, legal address: Public organization «Belarusian Union of Architects» 14 Karla Marksa str., Minsk 220030 Republic of Belarus
Purpose	Prepayment for the production of display panels and posters

Roller shutter systems (roller shutters) are installed on window or door openings and provide protection against prying looks, burglary attempts, noise, and weather. There are three types of roller shutter systems: roller shutters, rolling grills and roller garage doors.



Roller shutter is a roller shutter curtain assembled of narrow (from 36 up to 77 mm) aluminium roller shutter profiles (slats). The curtain is winded into a roll on the tube which is usually placed inside the shutter box. A roller shutter system also consists of guide rails which guide the movement of the curtain, a drive to control the shutter and the locking system. Due to wide colour range, roller shutters can be considered as an important decorative element of the façade. More than 30 colour solutions for roller shutters are offered today:



The shutter boxes are also selected depending on the exterior of the building. There are several types of shutter boxes for roller shutter systems: 45° and 20°, round, quarter-round. Exterior shutter boxes can be mounted in ready-built houses as well as during the construction stage.



Quarter-round shutter box



Round shutter box



45° shutter box



20° shutter box

Roller shutters with built-in shutter box are the most popular solution perfectly suitable for any type of building style and design. The shutter box is unseen being hidden inside of the window opening in a previously prepared housing. When the curtain is raised, it seems that there's no roller shutter system. One of the advantages of roller shutters with built-in shutter box is that they integrate with building frontage without interrupting its style.

Роллетные системы со встроенным коробом гармонично вписываются в фасад здания. Невидимый короб и весь механизм роллеты прячется в заранее подготовленной нише над оконным проёмом.

Система со встроенным коробом должна быть предусмотрена в проекте здания еще до начала строительства или реконструкции.

1 — утеплитель

теплоизоляционные материалы вставляются в нишу при необходимости защищают стены дома от промерзания и образования моста холода.

2 — декоративная штукатурка

покрывает фронтальную поверхность короба и после завершения работ обеспечивает единый цвет с фасадом здания.

3 — широкая цветовая гамма

более 30 цветов. С помощью роллет можно точно проработать тон фасада и краски для оформления, сделать не только контраст.



4 — короб, встроенный в нишу

позволяет скрыть механизм роллеты в фасаде здания, спрятать защитный короб в заранее подготовленную нишу над окном или дверным проёмом.

5 — ревизионная крышка

обеспечивает доступ к механизму роллеты для удобной обслуживания системы и выполнения сервисных работ.

6 — роллетное полотно

может изготавливаться из профильной ролливой прокатки либо из экструдированных профилей различных цветов. Присоединяется к роллетной системе за счет пазов, что обеспечивает дополнительную шумо- и теплоизоляцию к установленным дверям или окнам.

КАРТИНКА (PICTURE)

- Roller shutter systems with built-in shutter box harmoniously integrate with the façade. The shutter box is unseen being hidden inside of the window opening in a previously prepared housing. The built-in shutter box system is to be foreseen in the building project before the building or reconstruction start.

1 – Heat insulation

protects the building walls from frost penetration and cold bridge formation

2 – Decorative plaster

covers the front shutter box surface and makes the shutter box indistinguishable from the surrounding surface.

3 – Wide colour range

includes more than 30 colours. Roller shutters can either match the façade or serve as a contrasting element.

4 – Built-in shutter box

Allows to hide the roller shutter mechanism inside of the window opening in a previously prepared housing.

5 – Bottom flat

provides maintenance accessibility to the roller shutter mechanism.

6 – Roller shutter curtain

can be made of roll formed or extruded profiles of different colours. Roll formed profiles are filled with foam ensuring additional noise and heat insulation.

Roller shutter systems are also one of the most effective methods to reduce power inputs. Roller shutters protect window openings, which are the main cause of heat loss in winter and of undesirable heating in summer, ensuring energy savings the whole year round:

- on heating in winter: the air space between the window and the shutter is performing a function of thermos and retains the heat.

In order to confirm products' thermal efficiency ALUTECH Group carried out the research in ift Rosenheim international institute (Germany) according to main European standards methodology in this sphere. The tests carried out according to EN ISO 12567-1 have shown that heat losses through windows are reduced by more than 30% due to the usage of roller shutters (Test reports № 12-002107-PR01, № 12-002107-PR02 (26/11/2012) and № 11-00216-PR01 (11/10/2011)).

- On conditioning in summer: the shutter blocks the solar radiation on the outside of the window preventing its heating and heat diffusion inside of the premises.

The research carried out by the French research center SNFPSA has shown that roller shutters reduce heat conductivity of the windows up to 70%. The indoor temperature goes at least 5°C down regardless of glazing type and climate region.



ЗАЩИТА ОТ СОЛНЦА
 * снижение расходов на охлаждение помещения
 * летом в доме может быть на 9° С прохладнее



ПЕРЕГРЕВ ПОМЕЩЕНИЯ ЛЕТОМ
 - дополнительные затраты на кондиционирование
 - выгорание мебели и обоев под воздействием солнечных лучей



СОХРАНЕНИЕ ТЕПЛА ВНУТРИ ДОМА
 * Зимой расходы на отопление сокращаются на 10%



ПОТЕРЯ ТЕПЛА, ОХЛАЖДЕНИЕ ПОМЕЩЕНИЯ
 - До 25% всех потерь тепла происходит через окна

КАРТИНКА (PICTURE)

- (вверху слева) SUN PROTECTION
 + Lower energy consumption. The temperature can be reduced by 9°C
- (внизу слева) – WARM IN WINTER

- + Heat losses through windows are 25% of all the losses from heat of the building. ALUTECH roller shutters reduce these losses by 4-6%
- (вверху справа) – ROOM OVERHEATING IN SUMMER
 - + Additional conditioning costs
 - + Furniture and wallpaper fading
- (внизу справа) – HEAT LOSS, COOLING
 - + Up to 25% of overall heat loss occurs through windows

It is also proved that the use of roller shutters allows reducing the noise inside by 5–10 dB (if roller shutter is closed). The high level of roller shutters sound insulation is confirmed by the St. Petersburg State University of Architecture and Civil Engineering, in the Scientific-Research Test Centre for Building Structures “Block”. Thereby, the noise insulation of the window with shutter in a closed position is increased in average by 17%.

More information about roller shutter systems:

<http://www.alutech-group.com/product/rolleti/roll/opisanie/>

Roller garage doors operate in the same way as roller shutters but are made of wider and solider profiles. The curtain is produced of up to 7 m long profiles, which enables to cover wider surfaces. Such curtain protects the opening and bear powerful blows.



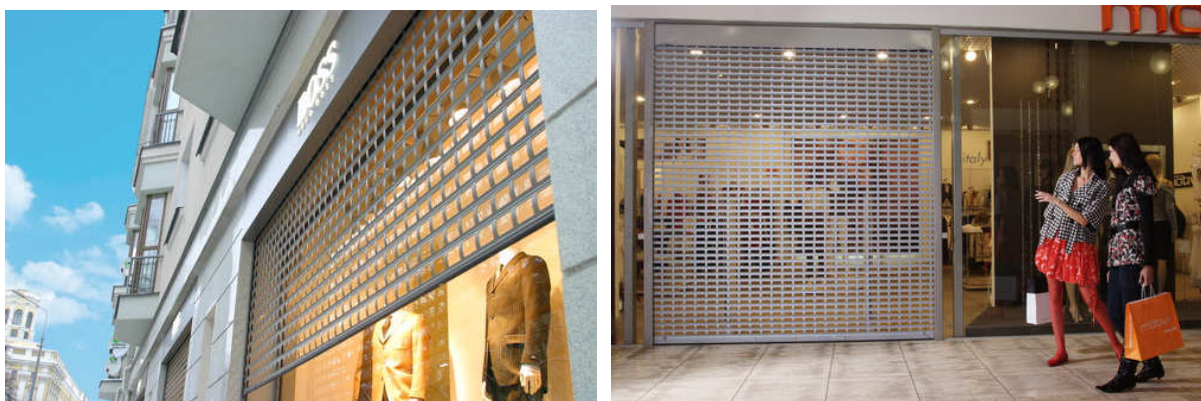
Roller garage doors are designed to be installed in shopping malls, production and storage facilities, and garages. Roller garage doors can be installed on the opening or in the opening from outside or inside. Max opening dimensions for roller garage doors installation: width – 6 m, surface area – 18 m².

In order to ensure the ease of use of roller garage doors it is possible to install profiles with windows with special transparent polycarbonate inserts. It provides a day light access into the premises. Additional ventilation is attained due to the special profile with vents.

More information about roller garage doors:

<http://www.alutech-group.com/product/rolleti/rolletnye-vorota/opisanie/>

Rolling grill is a roller shutter system made of perforated profiles due to which the shop windows are absolutely visible. These moving systems provide excellent appearance to shop windows and stained glass windows, and good protection of the valuables. They are an important security element of today's trade centers, banks, offices, cafes and restaurants. Rolling grills are to be installed on the openings up to 7 m wide with surface area up to 21 m².



More information about rolling grills:

http://www.alutech-group.com/en/products/roller_shutter_systems/rolling_grills/description/

Roller shutter systems can be operated both manually and with the use of automated drives. In comparison to manual operation, automatic operation provides the most convenient opening and closing of roller shutters without wearisome rotation of the handle or winding the curtain using the tape. In spacious houses, offices or shopping malls with many roller shutters only automatic operation enables to operate all roller shutters simultaneously or one at a time with just one press of a button.

More information about control systems for roller shutters:

http://www.alutech-group.com/en/products/roller_shutter_systems/automatics/advantages/