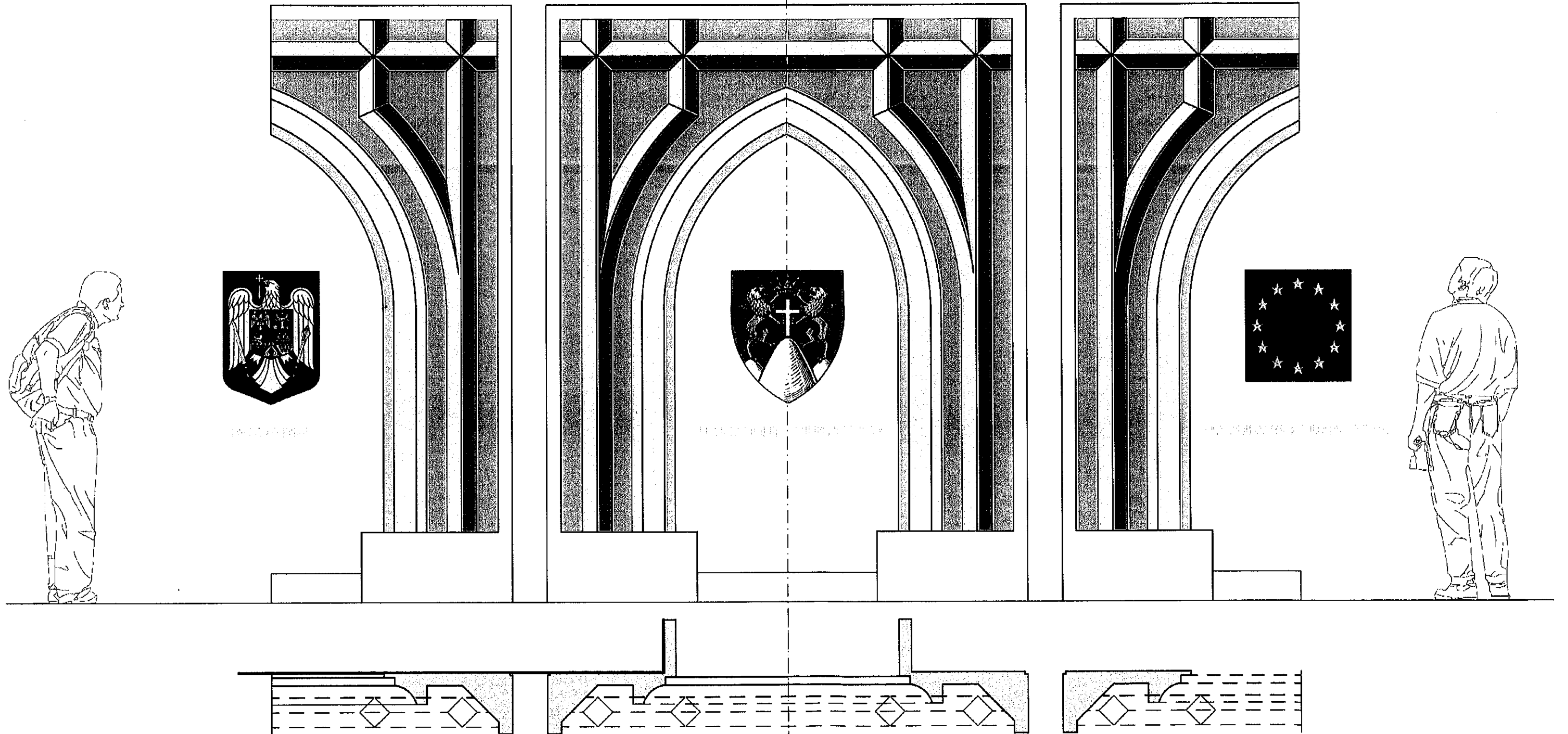


PANOU DECORATIV IN AXUL INTRARII sc/ 1:20 - prezentare

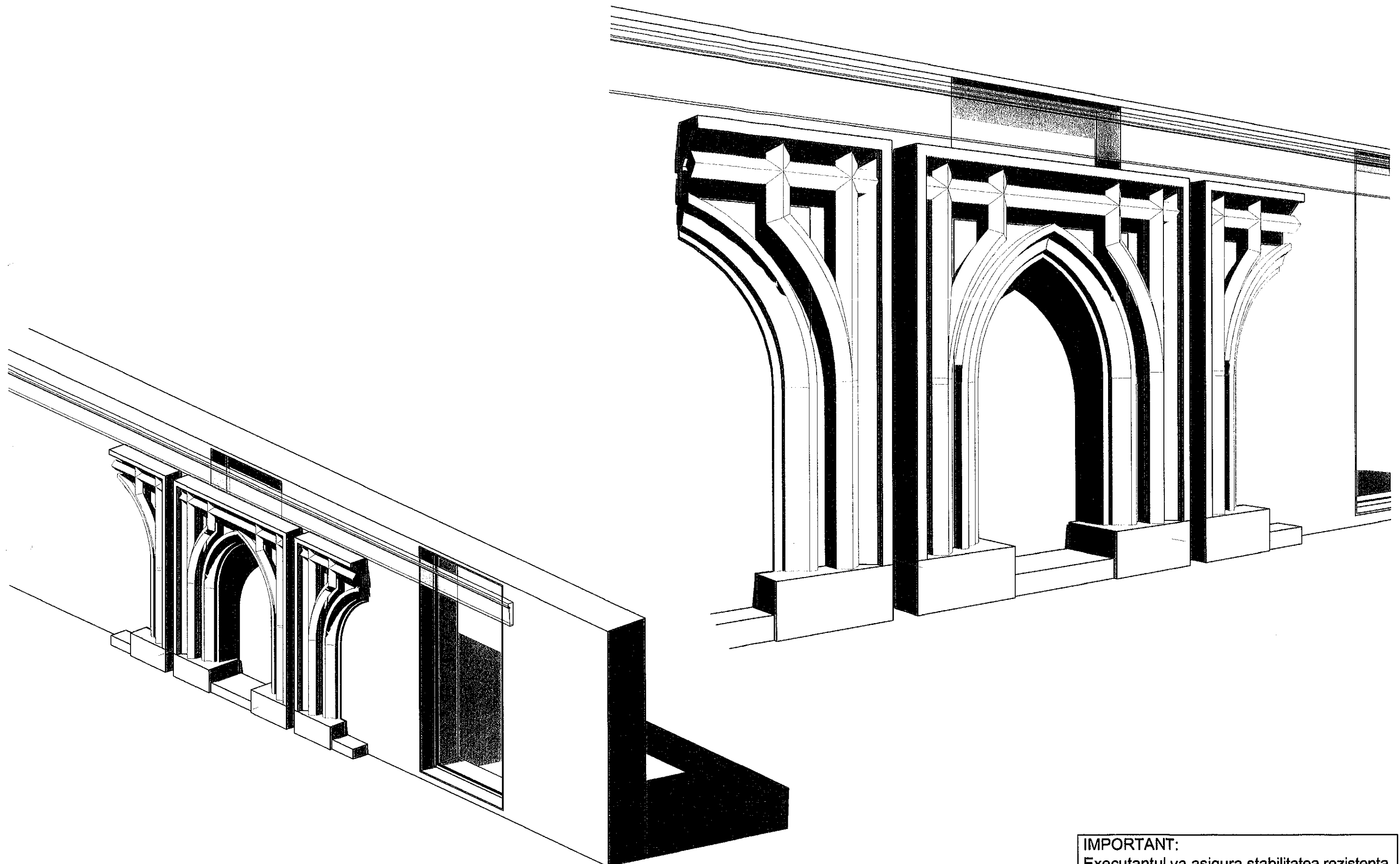
HOL ACCES CONSILIUL JUDETEAN SUCEAVA



IMPORTANT:
Executantul va asigura stabilitatea, rezistenta
si siguranta montajului

PANOU DECORATIV IN AXUL INTRARII sc/ 1:20 - imagini 3d -perspective

HOL ACCES CONSILIUL JUDETEAN SUCEAVA

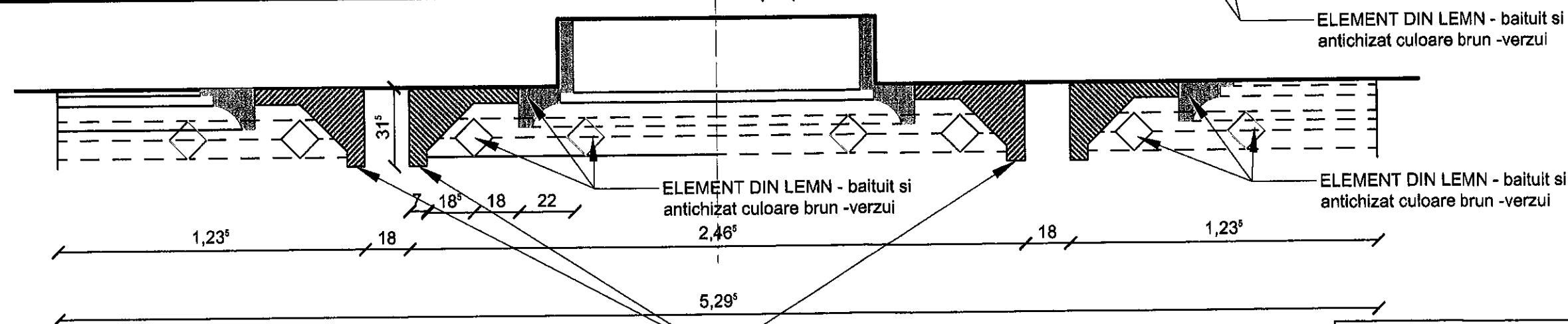
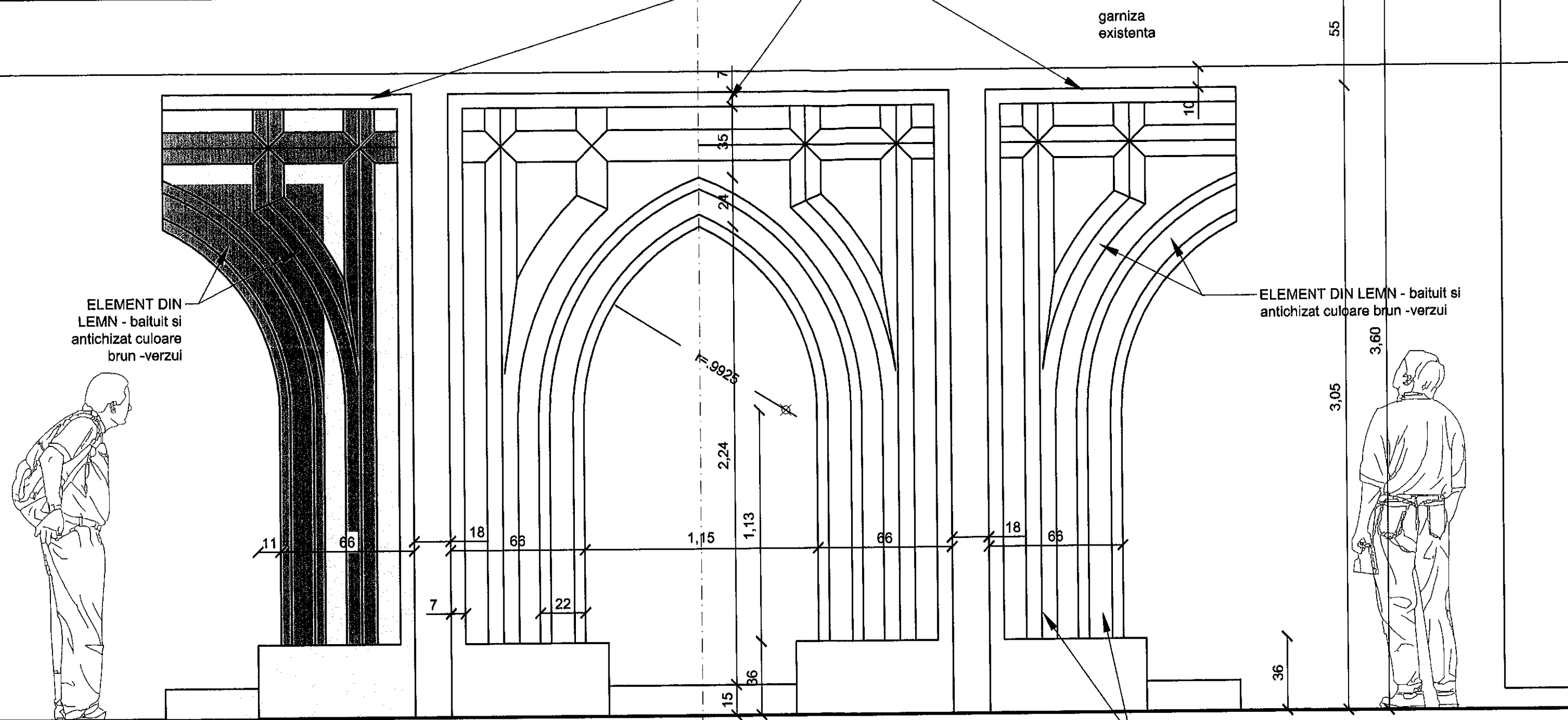


IMPORTANT:
Executantul va asigura stabilitatea,rezistenta
si siguranta montajului

PANOU DECORATIV IN AXUL INTRARII sc/ 1:20 - date tehnice

HOL ACCES CONSILIUL JUDETEAN SUCEAVA

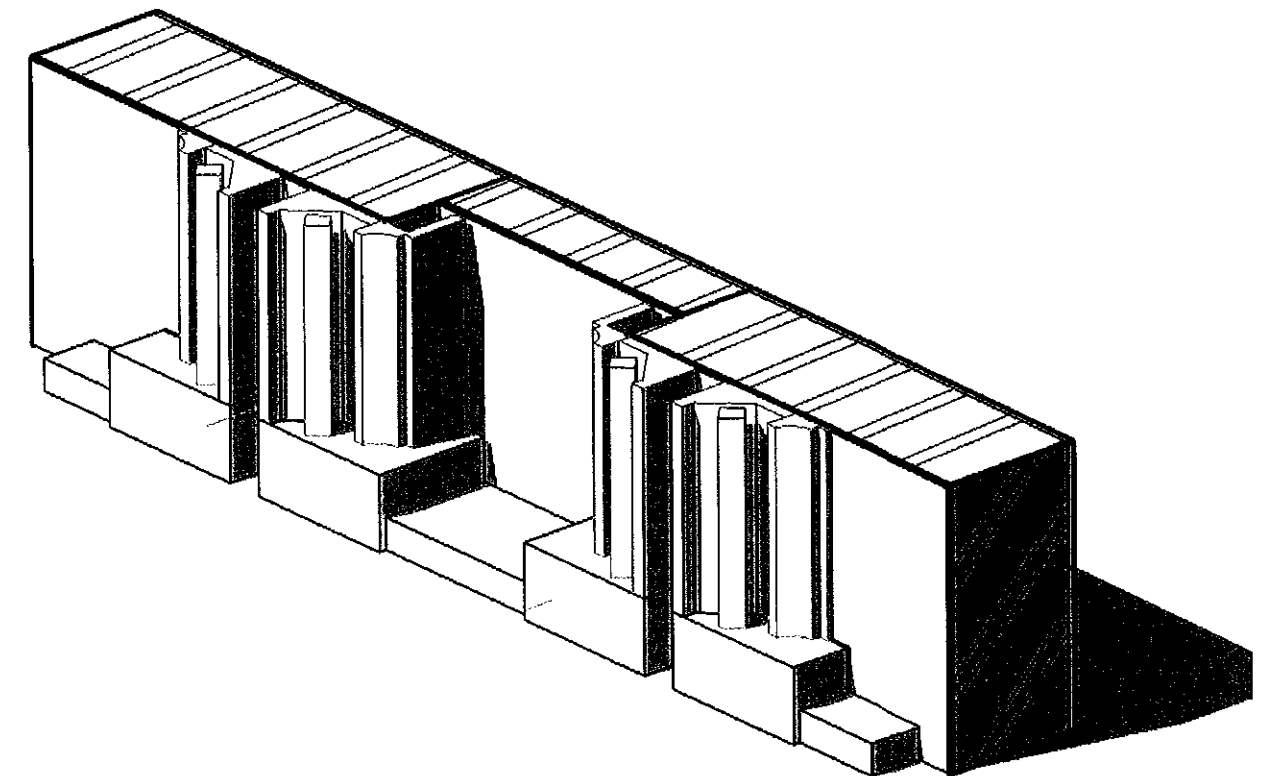
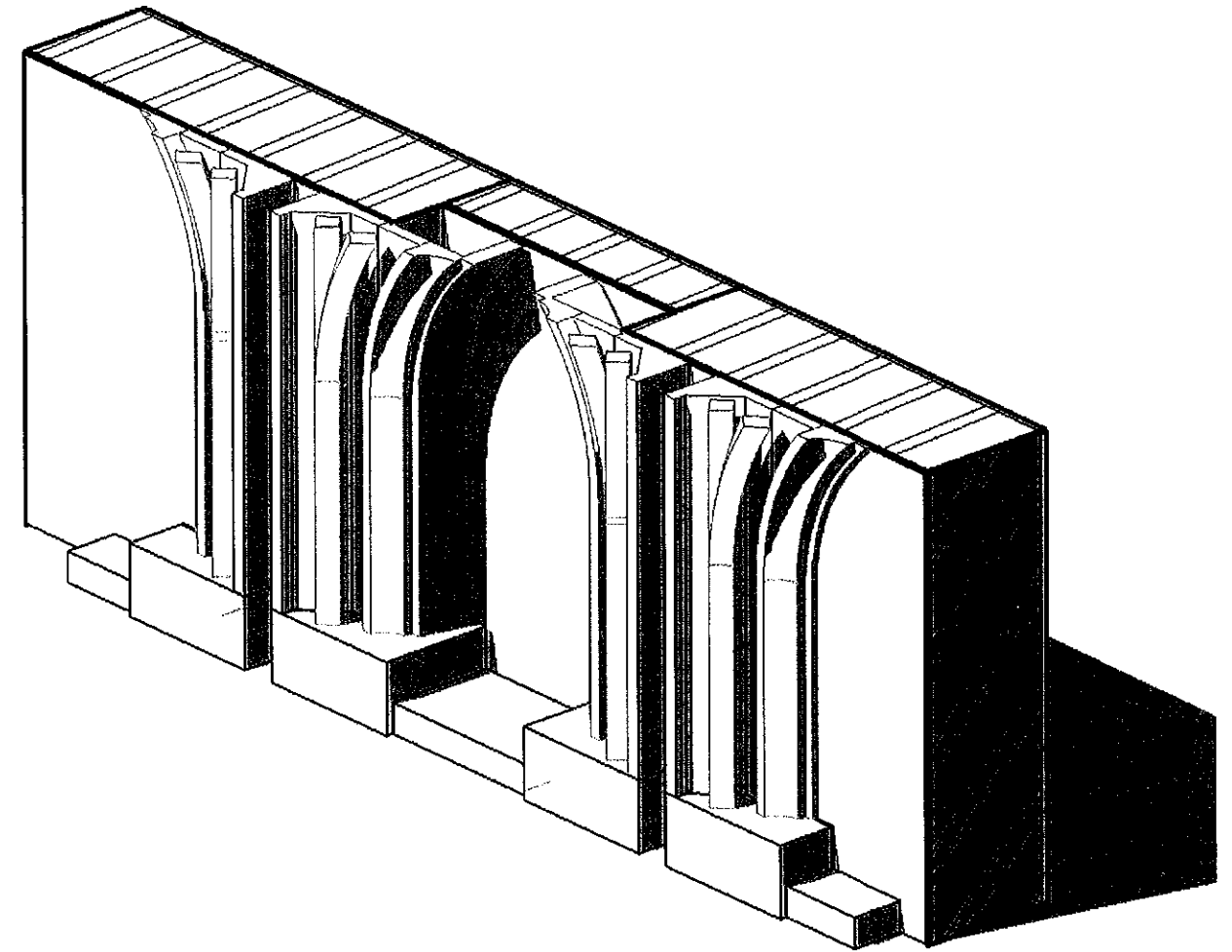
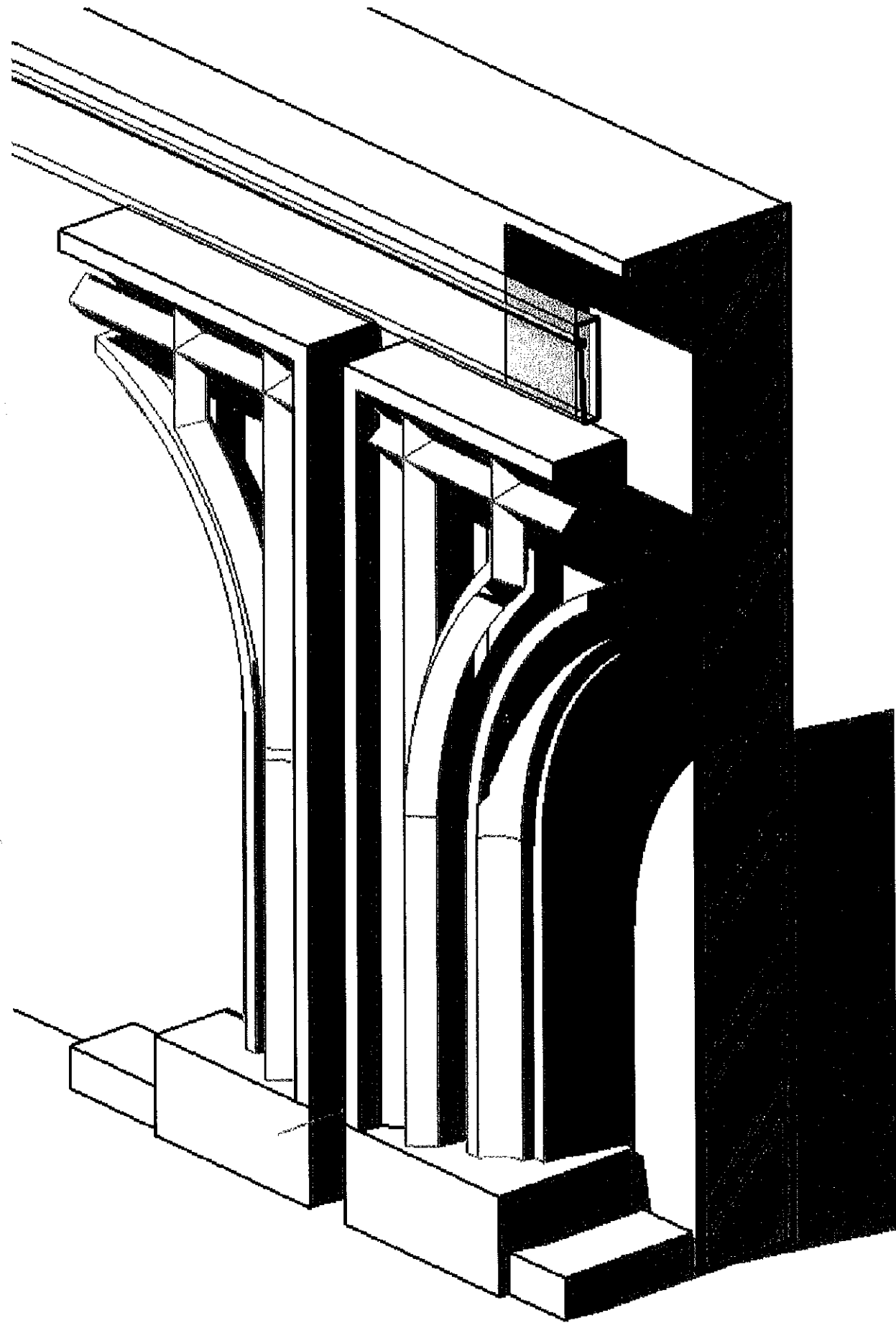
ELEMENT IMBRACAT IN GIPS CARTON - culoare alba cu textura



IMPORTANT:
Executantul va asigura stabilitatea,rezistenta
si siguranta montajului

PANOU DECORATIV IN AXUL INTRARII sc/ 1:20 - imagini 3d -vederi+sectiuni

HOL ACCES CONSILIUL JUDETEAN SUCEAVA



Executantul va asigura stabilitatea,rezistenta si siguranta montajului

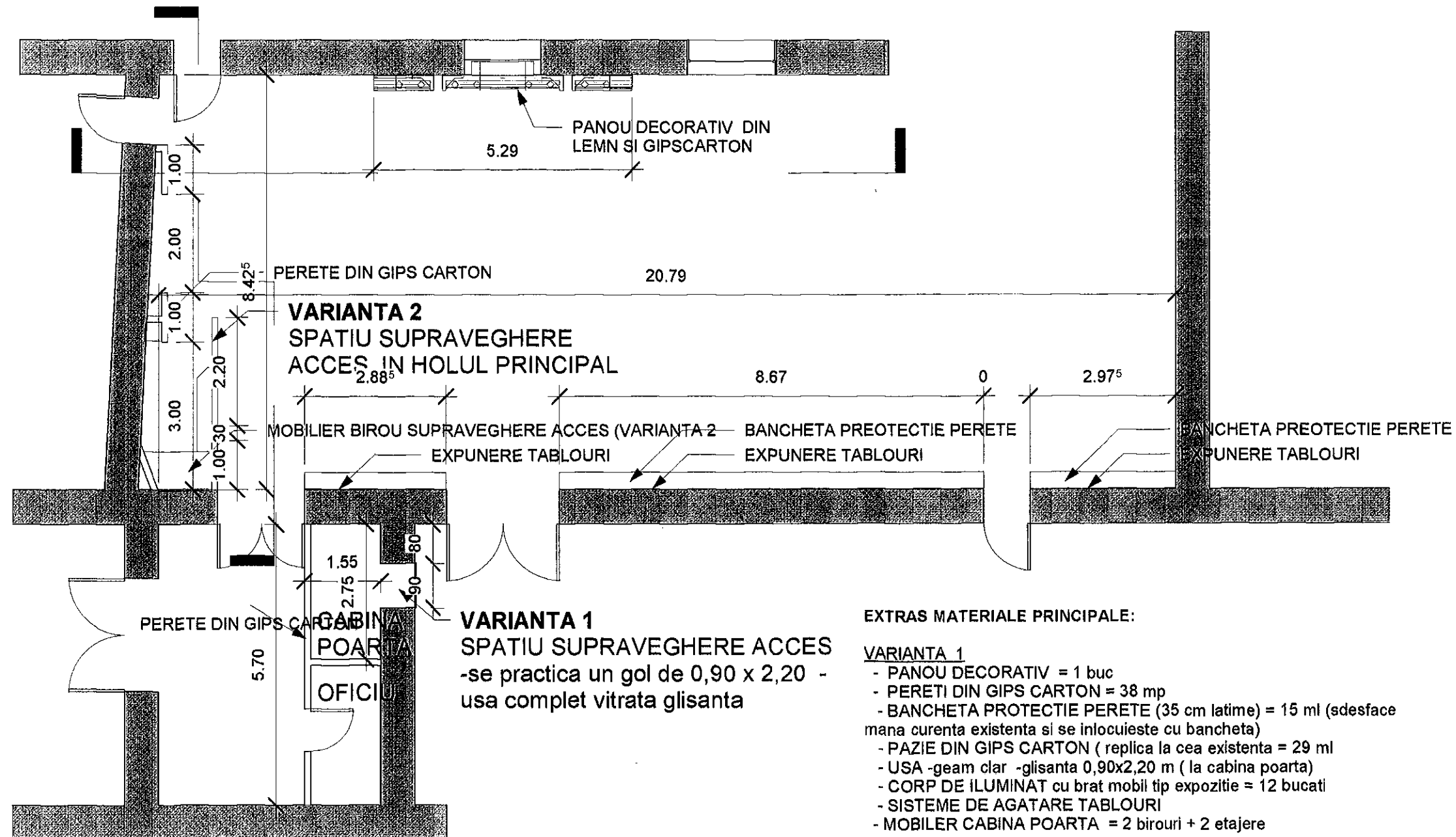
Se va avea in vedere pentru
excesive spații supraveghere -
varianta 2.

1

VARIANTE PLAN PARTER

1 : 100

HOL ACCES CONSILIUL JUDETEAN SUCEAVA



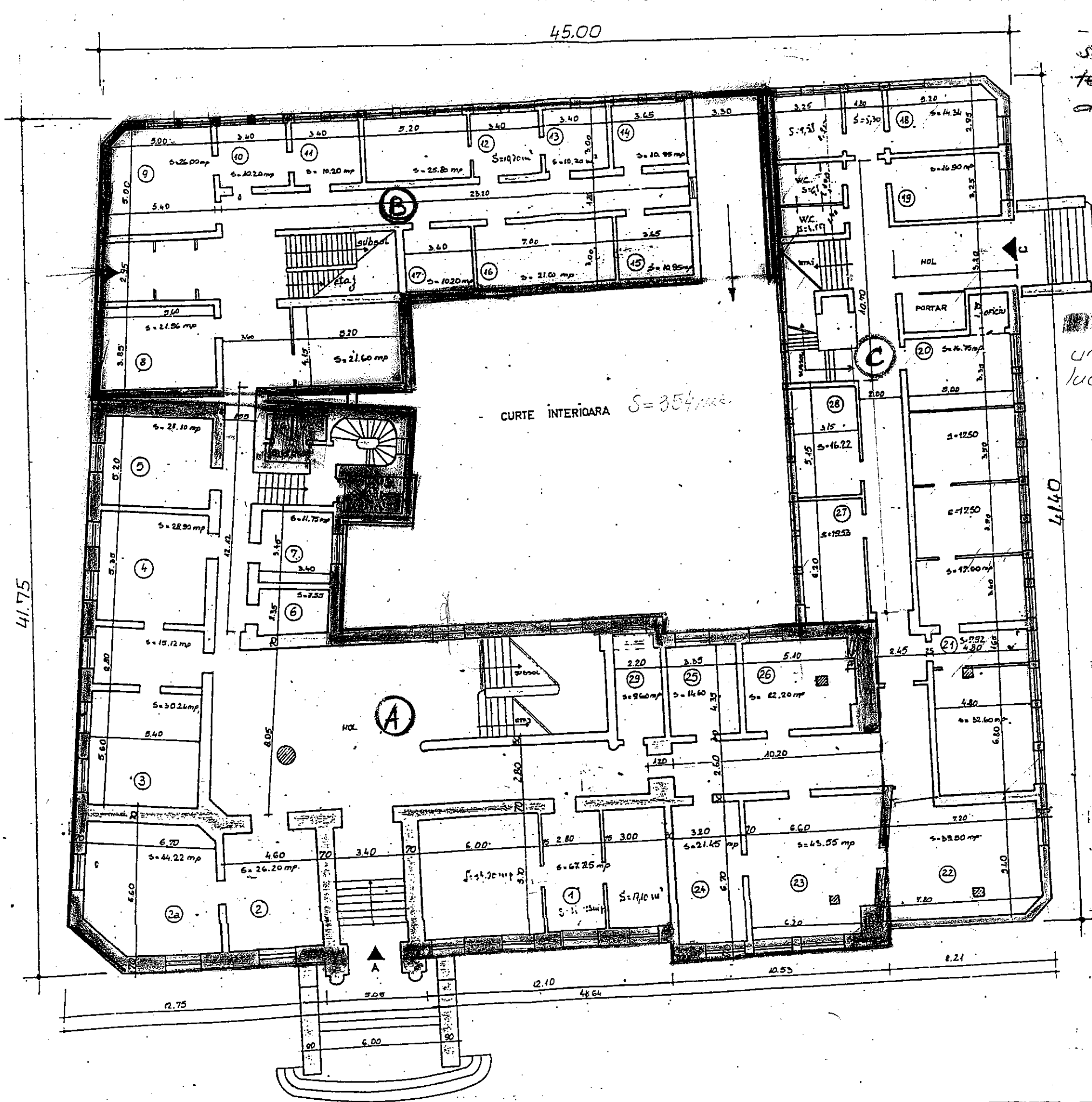
EXTRAS MATERIALE PRINCIPALE:

VARIANTA 1

- PANOU DECORATIV = 1 buc
- PERETI DIN GIPS CARTON = 38 mp
- BANCHETA PROTECTIE PERETE (35 cm latime) = 15 ml (se desface mana curenta existenta si se inlocuieste cu bancheta)
- PAZIE DIN GIPS CARTON (replica la cea existenta = 29 ml
- USA -geam clar -glisanta 0,90x2,20 m (la cabina poarta)
- CORP DE ILUMINAT cu brat mobil tip expozitie = 12 bucati
- SISTEME DE AGATARE TABLOURI
- MOBILIER CABINA POARTA = 2 birouri + 2 etajere

VARIANTA 2

- PANOU DECORATIV = 1 buc
- PERETI DIN GIPS CARTON = 22 mp
- BANCHETA PROTECTIE PERETE (35 cm latime) = 15 ml (se desface mana curenta existenta si se inlocuieste cu bancheta)
- PAZIE DIN GIPS CARTON (replica la cea existenta = 29 ml
- CORP DE ILUMINAT cu brat mobil tip expozitie = 12 bucati
- SISTEME DE AGATARE TABLOURI
- MOBILIER SPATIU SUPRAVEGHERE = 1 birou+ 2 etajere



- in zona evidentata
se vor reface instalatiile
termice, electrice si
de telefonie

- grupurile sanitare
unde se vor realiza
lucrari de modernizare

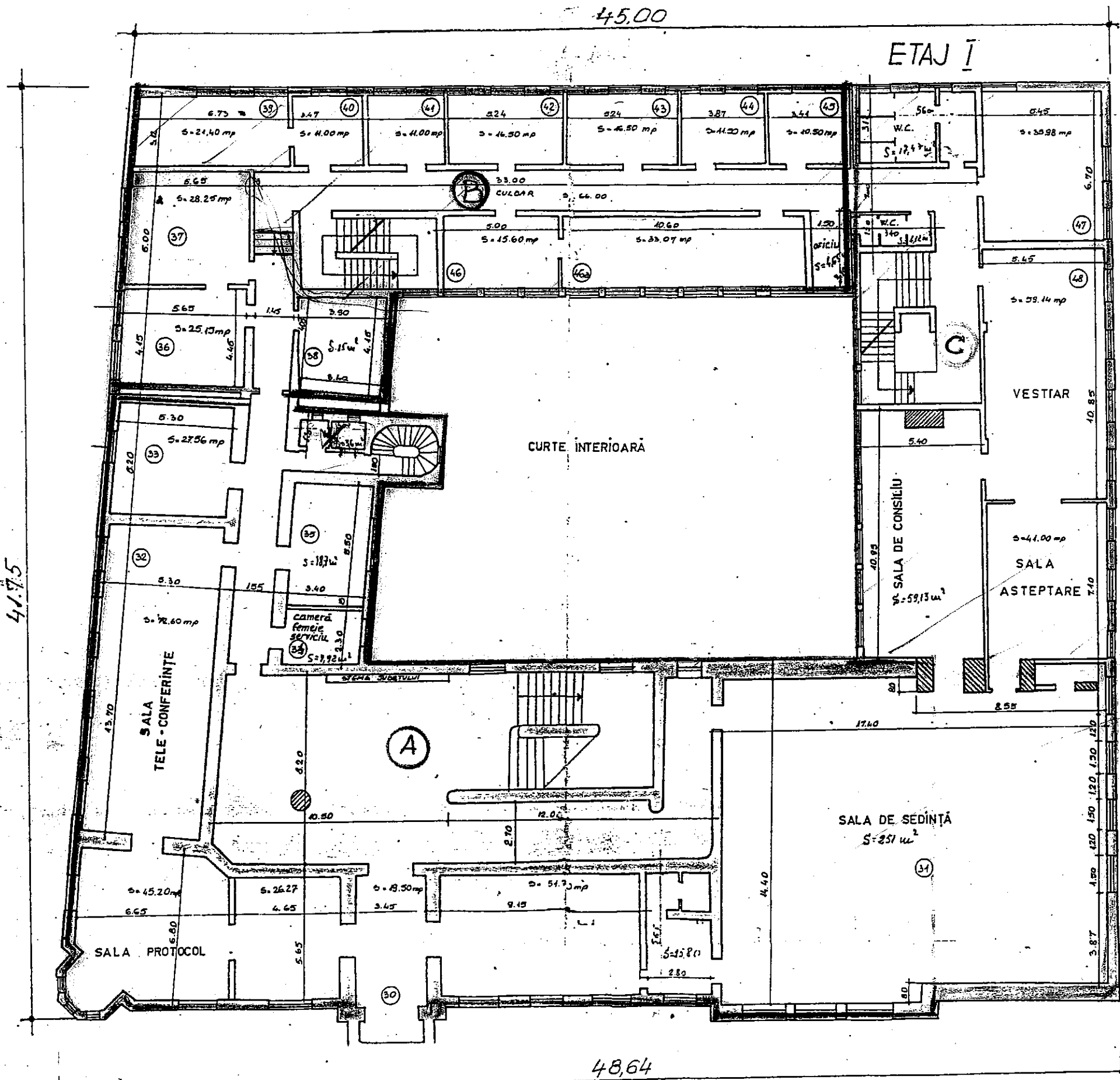
CURTE INTERIOARA S=354 mp.

LEGENDA:
 — CORP "A"
 — CORP "B"
 — CORP "C"

PREFECTURA JUDETULUI
SUCEAVA

PLAN PARTER
Scara 1:200

S₀ = 1581 mp
S₁ = 5833 mp



45.00

ETAJ I

in zona evidentiata
se vor reface instalatiile
termice, electrice si
de telefonie.

41.75

41.14

48.64

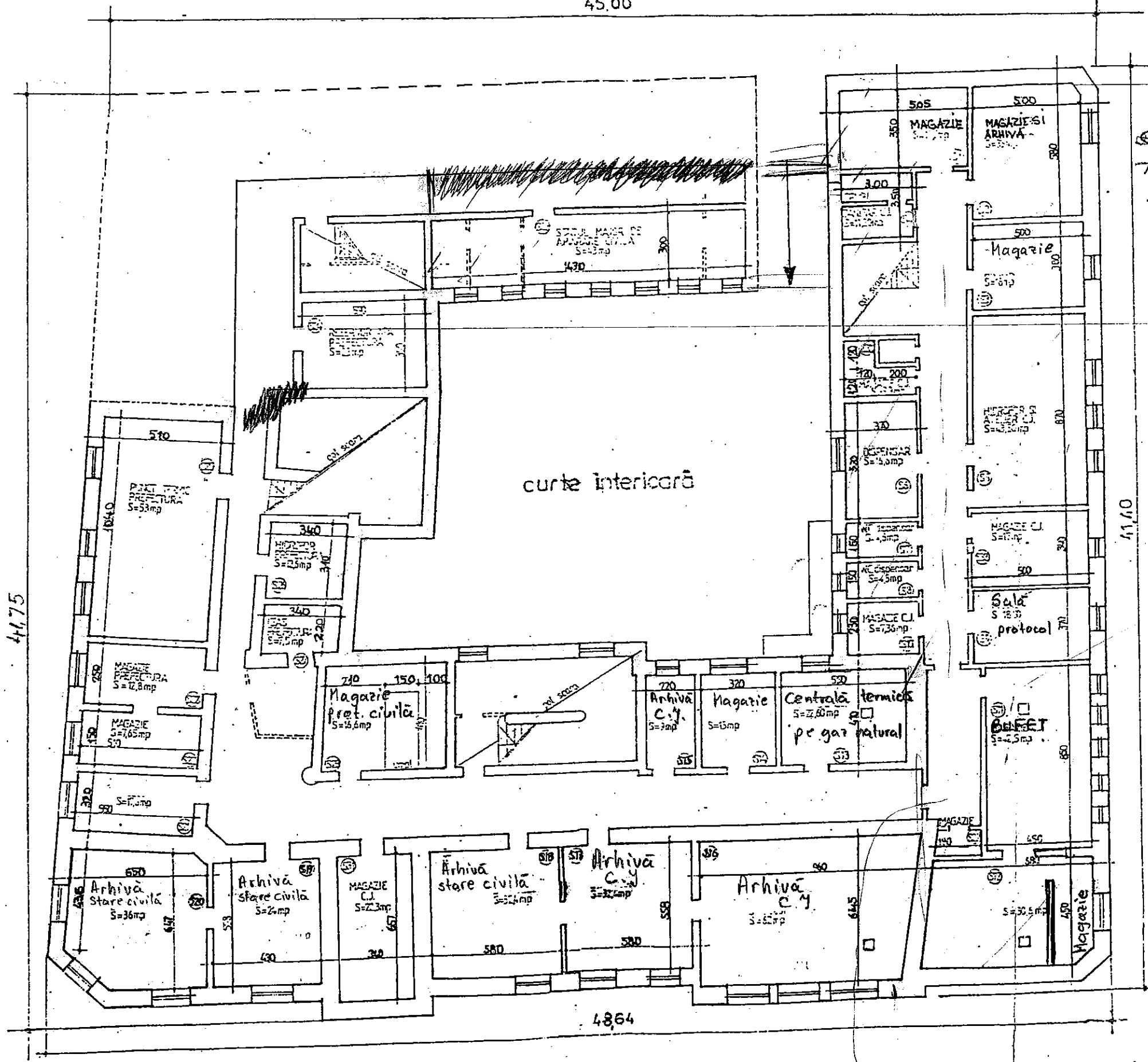
$S_c = 486.14$

PREFECTURA JUDETULUI
SUCEAVA

PLAN ETAJ I
Scara 1:200

45.00

41.75



-in zona evidentiata
se vor reface instalatiile
termice, electrice si de
telefonie.

Consiliul Județean
SUCEAVA

PLAN SUBSOL
Scara 1:200

522 mp