

ANEXA 1
STUDIU TOPOMETRIC





SUPORT TOPOGRAFIC PENTRU OBTINEREA AUTORIZATIEI DE CONSTRUIRE

Beneficiar : ADMINISTRATIA PARCULUI NATURAL BUCEGI

Noiembrie 2008

S.C. TOPOMONT CONSULT S.R.L.
CALEA BUCURESTI nr. 44, N. 15

CUI: RO16612596, J29/1500/2004

Sediu social: SINAIA 106100, Str. GHIOCEV, OR nr. 73 - tel/fax : 0244.315.499
office@topomont.ro



MEMORIU TEHNIC JUSTIFICATIV

1. DENUMIREA LUCRARII: • Suport topografic pentru plan de situatie conform Legii 50/1991 republicata

2. OBIECTUL LUCRARII : Suport topografic pentru obtinerea autorizatiei de construire.

3. PROPRIETAR : STATUL ROMAN R.N.P., OCOLUL SILVIC AZUGA
BENEFICIAR:ADMINISTRATIA PARCULUI NATURAL BUCEGI

4. EXECUTANT: • SC Topomont Consult SRL cu sediul in Sinaia, str. Ghiocelor , nr. 23, autorizata de Agentia Nationala de Cadastru si Publicitate Imobiliara cu aut. 570 din 13.09.2006, inregistrata la R.C. cu nr. J/29/1500/2004, cod fiscal 16612596, tel. 0244-3115499.

5. AMPLASAMENTUL IMOBILULUI: • Terenul este amplasat in intravilanul oraşului Busteni, str.Telecabinei, f.n, U.P.I CARAIMAN, u.a.16-%, având ca vecini:

punct cardinal	vecini	materializare hotar
NORD	Str. Telecabinei	-
EST	Propr. Ocolul Silvic Azuga	-
SUD	Paraul Jepi	-
VEST	Propr. de stat	-

6. SITUATIA JURIDICA A IMOBILULUI: • Terenul este proprietatea Statului Roman R.N.P., Ocolul Silvic Azuga. Terenul nu este inregistrat in cartea funciara .

7. CONSTRUCTII EXISTENTE PE TERENUL MASURAT: • Pe terenul măsurat in suprafata totala de 1847mp. nu exista nici o constructie .

8. OPERATIUNI TOPOGRAFICE EFECTUATE PENTRU INTOCMIREA PLANULUI DE SITUATIE: • Ținând cont că densitatea punctelor de îndesire este satisfăcătoare în zona de lucru, lucrările s-au executat în sistem de proiectie Stereografic 1970. Pentru determinarea orientărilor și distanțelor s-a folosit o stație totală Sokkia Set530RK3. Măsurătorile au fost executate în prezenta proprietarului , după bornele indicate de acesta .

Punctele care au stat la baza drumuirii sunt GPS15 si GPS 16.

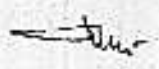
Am staționat pe punctul 1000, m-am orientat pe punctul 1001 , am determinat coordonatele punctelor 1002 si 1003, de unde am radiat punctele necesare întocmirii suportului topografic.



S-au determinat coordonatele punctelor de sprijin, punctelor de contur precum si cele ale detaliilor de planimetrie după care s-au calculat suprafețele prin metoda analitică folosind coordonatele punctelor de contur.

Pentru zona de lucru exista planul topografic al localitatii Busteni la scara 1:5000 , pus la dispoziție de O.C.P.I. al județului Prahova , care a putut fi utilizata pentru a se evidenta încadrarea in teritoriu a imobilului.

9. RETELE EXISTENTE IN ZONA: • apa, gaze, electrice, canal.


Întocmit,
SC TOPOMONT CONSULT SRL



INVENTAR DE COORDONATE

NR. PCT	X	Y	Z
1	434519.915	541437.599	915.697
2	434526.362	541437.362	915.350
3	434536.788	541437.126	914.367
4	434541.048	541436.422	914.203
5	434546.142	541434.779	914.188
6	434534.181	541431.024	914.813
7	434530.577	541431.504	914.629
8	434526.217	541432.072	915.831
9	434519.645	541432.262	914.458
10	434519.133	541431.532	914.447
11	434516.613	541433.223	915.121
12	434508.253	541431.654	914.519
13	434503.187	541427.395	912.163
14	434508.217	541424.928	915.111
15	434510.749	541426.562	914.846
16	434512.641	541425.450	914.566
17	434518.472	541427.910	914.417
18	434519.627	541424.984	914.652
19	434522.558	541424.496	915.210
20	434523.614	541425.386	915.213
21	434519.795	541421.489	915.578
22	434515.957	541420.070	915.299
23	434520.366	541418.429	915.839
24	434523.282	541417.877	916.070
25	434525.397	541416.309	916.162
26	434528.049	541415.480	916.173
27	434537.011	541411.977	916.078
28	434536.196	541409.846	916.208
29	434536.707	541407.335	916.480
30	434539.738	541402.202	917.087
31	434538.573	541397.843	917.433
32	434535.356	541399.749	917.082
33	434533.644	541399.983	916.977
34	434531.820	541399.034	917.003
35	434530.752	541396.402	917.217
36	434523.384	541404.043	917.035
37	434520.939	541405.207	917.063
38	434517.632	541416.400	915.823
39	434515.158	541414.401	915.959
40	434513.470	541414.041	916.003
41	434520.301	541412.303	916.332
42	434519.903	541409.478	916.577
43	434516.021	541411.876	916.136
44	434513.678	541411.453	916.083
45	434511.248	541412.923	915.961
46	434509.447	541410.849	916.128
47	434511.707	541409.024	916.095
48	434514.762	541409.048	916.265
49	434519.765	541405.888	916.933
50	434515.982	541406.552	916.502
51	434509.833	541407.026	916.102
52	434507.855	541408.930	925.872
53	434506.050	541409.416	915.148
54	434505.957	541409.271	915.767
55	434505.820	541408.825	915.783
56	434504.323	541409.055	914.400
57	434504.535	541409.705	914.370
58	434504.659	541409.717	913.389
59	434506.274	541415.204	915.513
60	434506.553	541415.395	913.971
61	434503.144	541416.312	913.637
62	434502.091	541416.435	917.962
63	434496.077	541432.780	912.051
64	434493.649	541432.241	913.749
65	434493.983	541412.181	915.843
66	434496.418	541410.791	915.723
67	434497.720	541410.437	914.444
68	434496.067	541411.090	914.377
69	434499.632	541410.780	913.466



70	434494.587	541418.232	914.796
71	434496.032	541417.720	913.628
72	434499.608	541416.994	913.780
73	434499.239	541416.915	912.836
74	434490.953	541396.723	915.614
75	434492.056	541396.854	914.987
76	434496.293	541393.903	914.965
77	434500.532	541392.609	915.753
78	434503.884	541391.834	917.181
79	434509.948	541390.613	917.239
80	434513.722	541388.084	918.300
81	434516.570	541387.105	918.282
82	434525.424	541383.282	918.263
83	434518.310	541403.350	916.915
84	434513.996	541403.002	916.479
85	434510.210	541403.127	916.560
86	434507.646	541397.466	916.689
87	434509.665	541397.504	916.866
88	434512.020	541396.767	917.081
89	434515.055	541396.230	917.458
90	434512.222	541392.167	917.304
91	434504.034	541394.233	916.697
92	434502.366	541393.368	915.989
93	434499.697	541388.304	917.279
94	434501.923	541386.520	917.740
95	434505.549	541388.008	917.299
96	434508.236	541387.383	917.575
97	434511.877	541386.666	918.364
98	434510.844	541385.404	918.038
99	434506.345	541386.259	918.006
100	434490.340	541384.329	918.317
101	434504.445	541383.149	918.349
102	434507.677	541380.953	918.688
103	434522.973	541376.975	918.724
104	434522.936	541370.539	919.326
105	434523.938	541365.270	919.700
106	434525.565	541359.985	920.144
107	434519.757	541356.314	920.251
108	434516.654	541357.675	920.342
109	434514.307	541357.135	920.582
110	434512.430	541355.648	920.640
111	434510.932	541353.549	920.844
112	434518.308	541362.154	920.033
113	434519.328	541369.519	919.368
114	434522.890	541367.714	919.502
115	434511.926	541376.191	919.251
116	434509.573	541377.856	919.319
117	434508.703	541377.514	919.361
118	434507.715	541379.238	918.947
119	434495.154	541386.461	916.380
120	434492.349	541388.733	915.275
121	434487.906	541388.605	915.433
122	434511.821	541382.534	918.893
123	434512.564	541384.390	918.768
124	434516.787	541393.045	917.893
125	434522.415	541410.455	916.485
126	434523.156	541412.320	916.444
127	434540.779	541309.360	933.948
128	434539.416	541313.339	933.249
129	434533.094	541316.144	932.366
130	434532.077	541316.358	932.314
131	434528.241	541314.566	932.568
132	434524.408	541312.760	932.847
133	434520.586	541310.964	931.617
134	434506.672	541312.420	931.986
135	434503.377	541315.075	932.281
136	434500.009	541317.664	931.999
137	434496.651	541320.228	932.658
138	434488.760	541318.887	930.252
139	434486.708	541315.295	931.794
140	434504.897	541377.027	919.183
141	434500.030	541380.255	918.732



497

2

142	434499.268	541377.881	916.630
143	434495.574	541378.494	919.109
144	434493.091	541379.161	918.160
145	434506.380	541365.623	920.201
146	434504.596	541367.569	920.168
147	434502.783	541369.157	919.053
148	434503.937	541369.462	920.040
149	434499.359	541371.917	918.525
150	434492.423	541373.090	910.515
151	434487.995	541374.984	917.318
152	434484.431	541375.052	916.038
153	434479.994	541377.422	916.130
154	434478.991	541377.620	916.747
155	434475.095	541377.429	917.253
156	434488.397	541399.798	915.279
157	434487.109	541390.402	916.275
158	434471.092	541366.273	918.514
159	434472.310	541365.148	918.724
160	434463.577	541357.578	920.139
161	434465.177	541355.139	917.714
162	434456.475	541349.115	923.178
163	434438.243	541340.413	924.737
164	434439.296	541342.908	918.916
165	434460.676	541348.596	918.495
166	434476.226	541357.702	917.480
167	434476.573	541357.576	918.247
168	434479.075	541355.536	918.102
169	434485.931	541352.508	920.524
170	434497.831	541368.669	910.989
171	434499.219	541365.712	920.169
172	434496.189	541366.475	920.072
173	434494.947	541365.092	919.689
174	434492.228	541363.530	919.252
175	434497.494	541363.059	920.504
176	434499.326	541359.594	921.040
177	434502.123	541363.539	920.619
178	434500.902	541361.800	920.911
179	434497.237	541356.469	921.299
180	434496.303	541355.191	921.411
181	434492.240	541358.770	920.003
182	434487.702	541358.318	919.969
183	434492.087	541356.655	921.155
184	434493.764	541353.240	921.654
185	434494.950	541352.688	921.621
186	434496.848	541351.411	921.679
187	434504.980	541345.073	921.732
188	434502.508	541341.577	922.238
189	434501.896	541339.732	922.474
190	434502.455	541335.393	922.992
191	434504.929	541332.619	923.218
192	434507.267	541331.399	923.297
193	434503.585	541324.066	923.698
194	434493.252	541325.213	923.939
195	434490.863	541324.846	924.077
196	434488.955	541323.833	924.134
197	434483.024	541315.943	925.104
198	434475.050	541321.098	925.093
199	434481.900	541330.435	924.100
200	434480.153	541332.195	923.930
201	434481.302	541333.806	923.690
202	434482.479	541335.194	923.575
203	434483.579	541336.866	923.517
204	434486.632	541341.161	922.973
205	434487.798	541342.875	922.818
206	434488.446	541344.142	922.756
207	434491.190	541347.854	922.233
208	434492.368	541349.521	922.099
209	434490.566	541353.866	920.985
210	434488.654	541353.179	920.978
211	434486.239	541354.402	920.357
212	434486.586	541350.122	921.587
213	434487.018	541349.878	921.930



214	434490.611	541346.676	922.328
215	434484.505	541338.554	923.434
216	434483.473	541340.544	922.930
217	434482.315	541339.988	922.624
218	434479.823	541339.576	920.783
219	434477.496	541342.288	920.113
220	434478.885	541350.193	918.834
221	434476.096	541351.271	918.913
222	434475.730	541351.455	917.860
223	434473.230	541344.755	918.002
224	434473.698	541344.788	919.363
225	434476.260	541338.560	920.896
226	434475.439	541336.874	921.075
227	434472.637	541334.561	920.972
228	434477.088	541332.675	923.457
229	434478.439	541331.866	923.857
230	434477.695	541330.316	924.139
231	434475.464	541331.031	923.802
232	434475.042	541329.407	924.318
233	434471.764	541330.841	923.285
234	434469.726	541328.591	923.442
235	434467.760	541329.125	922.171
236	434465.465	541325.297	922.058
237	434461.021	541327.273	919.894
238	434470.720	541337.441	918.823
239	434471.016	541337.343	919.569
240	434485.705	541345.248	922.511
241	434471.574	541327.705	926.671
242	434474.103	541324.867	926.725
243	434473.950	541322.387	927.218
244	434476.114	541329.653	925.064
245	434478.577	541328.023	925.461
246	434477.183	541326.167	925.612
247	434492.826	541350.151	922.063
248	434491.439	541350.887	921.737
249	434490.311	541362.411	919.182
250	434485.675	541360.103	918.991
1000	434562.988	541499.285	909.279
1001	434543.979	541606.924	900.711
1002	434523.584	541410.075	916.589
1003	434492.567	541344.778	922.408

Jim-



00NMSDR33 V04-04.02	01-Jan-02 00:00 211111			
10NMPADURE SILVA	121111			
06NMI.00000000				
01NM:SET630RK V31-03 147453SET630RK V31-03 14745331				
0.000				
02TP	1000430107.449	543240.900		1.614
0				
03NM1.500				
09F1	1000	1001109.675	105.0644	288.7500
0				
09F2	1000	1001109.679	294.9326	88.7652
0				
09F1	1000	100297.789	95.3110	51.1538
0				
09F2	1000	100297.794	304.6860	251.1430
0				
09F1	1000	175.499	94.6782	38.8268
0				
09F1	1000	272.190	94.7408	43.6290
0				
09F1	1000	367.638	95.3148	52.2376
0				
09F1	1000	466.755	95.4096	56.2548
0				
09F1	1000	566.842	95.4294	61.3698
0				
02TP	1002430107.449	543240.900		1.644
0				
09F1	1002	100097.812	104.8720	373.9602
0				
09F2	1002	100097.812	295.1290	173.9622
0				
09F1	1002	623.555	105.1944	370.6244
0				
09F1	1002	722.639	105.9240	380.3586
0				
09F1	1002	822.172	102.5888	392.8554
0				
09F1	1002	922.648	106.4038	11.6244
0				
09F1	1002	1022.033	106.6154	13.4608
0				
09F1	1002	1124.229	104.2390	19.0610
0				
09F1	1002	1226.563	105.3108	39.7638
0				
03NM2.500				
09F1	1002	1326.996	108.4418	55.6222
0				
03NM1.500				
09F1	1002	1421.433	104.8226	51.5220
0				
09F1	1002	1520.979	105.7336	42.5508
0				
09F1	1002	1618.996	107.2760	39.8190
0				
09F1	1002	1718.697	107.9062	18.2122
0				
09F1	1002	1815.565	108.5358	16.9548
0				
09F1	1002	1914.498	106.6966	4.9730



0				
09F1	1002	2015.386	106.3000	0.3132
0				
09F1	1002	2112.082	106.0954	20.8424
0				
09F1	1002	2212.654	107.2264	41.9390
0				
09F1	1002	238.997	106.3306	23.8450
0				
09F1	1002	247.836	105.3896	2.9060
0				
09F1	1002	256.516	105.3876	382.4240
0				
09F1	1002	267.033	105.0688	356.4882
0				
09F1	1002	2713.580	103.3538	309.3992
0				
09F1	1002	2812.624	102.6450	299.7878
0				
09F1	1002	2913.408	101.1986	287.3370
0				
09F1	1002	3017.974	98.7434	271.5702
0				
09F1	1002	3119.359	97.6972	256.8642
0				
09F1	1002	3215.663	98.5804	254.5984
0				
09F1	1002	3314.252	98.9074	250.3386
0				
09F1	1002	3413.777	98.7508	241.2400
0				
09F1	1002	3515.446	98.0032	231.1790
0				
09F1	1002	366.043	96.8108	198.3270
0				
09F1	1002	375.598	96.2368	167.7512
0				
09F1	1002	388.731	106.5724	48.5058
0				
09F1	1002	399.503	105.1880	70.2394
0				
09F1	1002	4010.888	104.2712	76.6470
0				
09F1	1002	413.988	106.4122	62.4808
0				
09F1	1002	423.732	102.6584	110.6798
0				
09F1	1002	437.797	104.8756	85.5586
0				
09F1	1002	449.825	104.2124	91.4616
0				
09F1	1002	4512.684	103.8770	85.4954
0				
09F1	1002	4614.171	102.7170	96.9568
0				
09F1	1002	4712.537	103.2386	105.7888
0				
09F1	1002	488.894	103.3454	107.8190
0				
09F1	1002	495.670	97.7542	153.3632



09F1 0	1002	508.545	101.7186	127.5030
09F1 0	1002	5114.099	102.8466	114.3316
09F1 0	1002	5215.794	103.4712	105.0636
09F1 0	1002	5317.618	105.7346	102.8326
09F1 0	1002	5417.672	103.4800	103.3394
09F1 0	1002	5517.833	103.3920	104.9102
09F1 0	1002	5619.428	107.6612	103.8074
09F1 0	1002	5719.198	107.8536	101.6756
03NM2.600 09F1 0	1002	5819.061	107.5102	101.6424
03NM2.500 09F1 0	1002	5916.148	100.8642	79.8590
09F1 0	1002	6017.935	106.4788	81.1660
09F1 0	1002	6121.473	106.2244	81.5854
09F1 0	1002	6221.825	108.1030	81.4562
09F1 0	1002	6335.857	106.5484	56.5086
09F1 0	1002	6437.301	103.3864	59.8622
09F1 0	1002	6529.676	99.7630	95.9186
03NM1.500 09F1 0	1002	6627.194	102.3650	98.7610
09F1 0	1002	6725.968	105.6190	99.5484
09F1 0	1002	6825.646	105.8546	97.9076
03NM2.500 09F1 0	1002	6924.069	106.0042	98.5674
03NM1.500 09F1 0	1002	7030.185	104.0878	82.9814
09F1 0	1002	7128.761	106.8862	83.2084
09F1 0	1002	7226.084	107.2208	83.2356
09F1 0	1002	7325.586	109.7330	83.0020
09F1 0	1002	7435.275	102.0188	125.1648
09F1 0	1002	7534.232	103.2474	125.7172
09F1 0	1002	7631.772	103.5436	134.4946
09F1 0	1002	7728.938	102.1548	141.7190



502

D

09F1	1002	7826.852	98.9358	147.9938
0				
09F1	1002	7923.769	98.6442	161.5314
0				
09F1	1002	8024.152	95.8666	173.6012
0				
09F1	1002	8124.067	95.9000	181.5720
0				
09F1	1002	8226.890	96.3738	204.8062
0				
09F1	1002	838.548	98.6434	158.0996
0				
09F1	1002	8411.917	101.3526	140.9038
0				
09F1	1002	8515.072	100.7290	130.9410
0				
09F1	1002	8620.323	100.1354	143.0482
0				
09F1	1002	8718.756	99.5502	147.2014
0				
09F1	1002	8817.634	98.7412	154.8972
0				
09F1	1002	8916.277	97.1608	165.2898
0				
09F1	1002	9021.216	98.2868	164.4484
0				
09F1	1002	9125.164	99.5846	143.7938
0				
09F1	1002	9227.016	101.7520	142.9030
0				
09F1	1002	9332.177	98.9196	147.7574
0				
09F1	1002	9432.016	97.9960	153.1052
0				
09F1	1002	9528.505	98.7358	156.8180
0				
09F1	1002	9627.408	98.0436	162.5806
0				
09F1	1002	9726.224	96.0366	170.9186
0				
09F1	1002	9827.774	97.0074	170.1970
0				
09F1	1002	9929.428	97.2448	160.5518
0				
09F1	1002	10036.092	97.2042	151.0660
0				
09F1	1002	10133.075	96.8884	161.1006
0				
09F1	1002	10233.241	96.2536	168.6122
0				
09F1	1002	10333.165	96.1758	199.2646
0				
09F1	1002	10439.626	95.8306	199.3960
0				
09F1	1002	10544.904	95.7906	200.9420
0				
09F1	1002	10650.245	95.6750	202.9566
0				
09F1	1002	10754.012	95.8506	195.9152
0				
09F1	1002	10852.979	95.6598	192.0684



103:

2

1	1002	10953.884	95.4490	189.3958
1	1002	11055.695	95.5308	187.5712
1	1002	11158.070	95.4896	186.4218
1	1002	11248.323	95.6486	193.4582
1	1002	11340.864	95.8916	193.7832
1	1002	11442.457	95.8450	199.3970
1	1002	11535.922	95.5334	179.3436
1	1002	11635.229	95.3214	174.3250
1	1002	11735.897	95.3354	173.1496
1	1002	11834.751	95.9414	170.1826
1	1002	11936.959	100.6070	144.5654
1	1002	12037.858	102.4518	138.5992
1	1002	12141.734	104.2746	134.9264
1	1002	12230.026	95.4156	174.7422
1	1002	12328.023	95.3730	174.6382
1	1002	12417.731	95.8320	182.9596
1	1002	1251.254	112.6338	80.4276
1	1002	1262.304	108.0074	12.4360
1	1002	127103.612	89.3738	211.2048
1	1002	12899.405	89.3736	210.7668
1	1002	12995.780	89.5624	207.3992
1	1002	13095.382	89.5536	206.1930
1	1002	13196.925	89.5528	203.5410
1	1002	13298.644	89.5538	200.9786
1	1002	133100.267	90.5148	198.5142
1	1002	134100.275	90.2790	189.5230
1	1002	13598.362	89.8948	187.0970
1	1002	13696.585	89.8952	184.5378
1	1002	13795.139	89.2936	181.8986



sch. 2

09F1 0	1002	13898.543	91.2386	177.2154
09F1 0	1002	139102.810	90.6402	176.8176
09F1 0	1002	100372.511	95.0124	172.2072
09F2 0	1002	100372.516	304.9870	372.2100
02TP 0	1003430107.449	543240.900		1.629
09F1 0	1003	100272.535	105.2256	132.5260
09F2 0	1003	100272.534	294.7760	332.5288
09F1 0	1003	14034.688	106.1658	137.5098
09F1 0	1003	14136.453	106.6572	147.5588
09F1 0	1003	14234.000	107.3324	148.0422
09F1 0	1003	14334.023	106.4252	155.0960
09F1 0	1003	14434.665	108.0596	159.7876
09F1 0	1003	14525.115	105.9294	123.5020
09F1 0	1003	14625.879	105.8346	129.8414
09F1 0	1003	14726.569	106.4414	135.4960
09F1 0	1003	14827.292	105.8326	133.2780
09F1 0	1003	14928.262	109.0688	145.1466
09F1 0	1003	15029.389	108.7396	161.0718
09F1 0	1003	15130.993	110.7714	170.3200
09F1 0	1003	15232.772	112.7094	177.0604
09F1 0	1003	15335.564	111.5324	184.1626
09F1 0	1003	15436.006	110.2816	185.7122
09F1 0	1003	15537.412	109.0210	192.0526
09F1 0	1003	15645.792	110.1326	166.6384
09F1 0	1003	15746.374	108.6230	168.3380
09F1 0	1003	15830.650	108.3792	210.7280
09F1 0	1003	15929.310	112.7094	210.5798
09F1 0	1003	16031.781	104.8088	234.2876
09F1 0	1003	16129.678	110.3912	237.7368
09F1 0	1003	16236.357	98.8782	253.1452
09F1	1003	16354.543	97.4318	265.8624



504. 2

0				
09F1	1003	16433.519	106.8908	264.3322
0				
09F1	1003	16532.372	107.9702	253.1720
0				
09F1	1003	16621.439	115.1602	218.1560
0				
09F1	1003	16720.928	113.1444	217.7960
0				
09F1	1003	16817.817	116.0150	217.9042
0				
09F1	1003	16910.384	112.4216	205.9176
0				
09F1	1003	17024.720	109.1676	146.9522
0				
09F1	1003	17122.093	106.8354	141.1714
0				
09F1	1003	17222.135	107.1026	150.2272
0				
09F1	1003	17320.650	108.8088	153.3338
0				
09F1	1003	17419.041	111.0384	161.9084
0				
09F1	1003	17519.042	106.8078	143.9978
0				
09F1	1003	17616.354	105.8370	133.5116
0				
09F1	1003	17721.141	105.7832	130.7646
0				
09F1	1003	17819.032	105.7804	131.7690
0				
09F1	1003	17912.650	106.2392	136.5648
0				
09F1	1003	18011.120	106.4586	138.8280
0				
09F1	1003	18114.224	111.4030	162.2434
0				
09F1	1003	18214.633	111.6718	182.7144
0				
09F1	1003	18311.967	107.3682	163.3270
0				
09F1	1003	1848.592	106.5526	151.8118
0				
09F1	1003	1858.312	107.0288	142.1318
0				
09F1	1003	1867.941	106.8922	124.2730
0				
09F1	1003	18712.443	104.1214	62.2694
0				
09F1	1003	18810.448	101.8228	40.9260
0				
09F1	1003	18910.607	100.3784	29.1936
0				
09F1	1003	19013.640	97.8758	12.4204
0				
09F1	1003	19117.353	97.5008	11.2860
0				
09F1	1003	19219.892	97.5662	13.7518
0				
03NM2.000				
09F1	1003	19323.519	95.4998	391.8024



0				
03NM1.500				
09F1	1003	19419.627	95.4498	362.9872
0				
09F1	1003	19520.064	95.1088	355.3286
0				
09F1	1003	19621.314	95.2256	349.8876
0				
09F1	1003	19730.481	94.6326	340.4156
0				
09F1	1003	19829.565	94.4884	320.2122
0				
09F1	1003	19917.939	94.4450	320.0662
0				
09F1	1003	20017.731	94.9922	311.1884
0				
09F1	1003	20115.767	95.3408	309.9198
0				
09F1	1003	20213.997	95.2744	308.9396
0				
09F1	1003	20312.014	94.8026	306.7142
0				
09F1	1003	2046.964	96.0116	295.6060
0				
09F1	1003	2055.142	96.5210	284.9356
0				
09F1	1003	2064.175	96.6594	270.5016
0				
09F1	1003	2073.384	105.7302	187.5528
0				
09F1	1003	2084.767	105.8556	163.4278
0				
09F1	1003	2099.434	110.5174	174.5564
0				
09F1	1003	2109.398	110.6112	188.5024
0				
09F1	1003	21111.723	111.9094	197.7920
0				
09F1	1003	2128.077	107.5064	214.3340
0				
09F1	1003	2136.995	105.5290	208.4870
0				
09F1	1003	2142.733	104.8618	211.7122
0				
09F1	1003	21510.224	94.4094	302.6146
0				
09F1	1003	21610.039	97.5038	288.4948
0				
09F1	1003	21711.316	99.5122	288.5826
0				
09F1	1003	21814.800	107.5618	283.7944
0				
09F1	1003	21915.466	110.0170	271.1878
0				
03NM2.500				
09F1	1003	22014.961	111.5632	236.7656
0				
09F1	1003	22117.913	109.7176	236.8532
0				
09F1	1003	22218.482	112.7498	236.7238

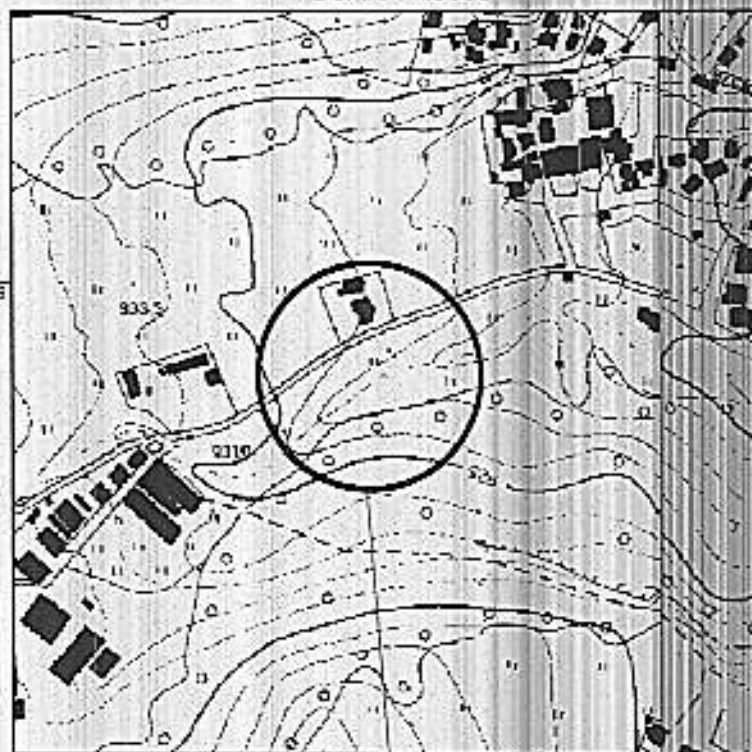


for R

09F1	1003	22319.649	111.5142	260.8342
0				
09F1	1003	22418.994	107.3032	260.6896
0				
09F1	1003	22517.461	102.3370	283.9226
0				
09F1	1003	22618.869	101.5576	288.2826
0				
09F1	1003	22722.403	101.6054	290.9166
0				
09F1	1003	22819.742	93.7978	303.0058
0				
03NM1.500				
09F1	1003	22919.185	95.6158	307.8970
0				
09F1	1003	23020.806	95.0934	309.8700
0				
09F1	1003	23121.979	96.3332	303.8608
0				
09F1	1003	23223.379	95.1440	306.5962
0				
09F1	1003	23325.051	98.0978	298.3350
0				
09F1	1003	23428.009	97.9430	300.0078
0				
09F1	1003	23529.335	100.7936	296.5938
0				
03NM2.500				
09F1	1003	23633.381	99.0060	300.4338
0				
09F1	1003	23736.114	102.8978	293.0096
0				
09F1	1003	23823.205	107.4624	281.3834
0				
09F1	1003	23922.882	105.4814	281.9078
0				
03NM1.500				
09F1	1003	2406.878	100.2436	256.4078
0				
09F1	1003	24127.373	90.3472	304.2250
0				
09F1	1003	24227.475	90.2586	313.1578
0				
09F1	1003	24329.493	89.8538	316.6008
0				
09F1	1003	24422.345	92.7840	308.4720
0				
09F1	1003	24522.022	91.5206	316.4692
0				
09F1	1003	24624.341	91.9370	316.7826
0				
09F1	1003	2475.400	105.5966	157.6902
0				
09F1	1003	2486.264	108.1504	172.3774
0				
09F1	1003	24918.091	111.8734	168.9580
0				
09F1	1003	25017.173	113.2384	187.6616
0				



PLAN DE ÎNCADRARE ÎN ZONA SCARA 1:5000



amplasament

COORDONATE PERIMETRU TEREN

Nr. Pct.	Coordonate puncte de contur		Lungimi linii D(i,j+1)				
	X [m]	Y [m]					
200	434480.153	541332.195	17.86				
214	434490.611	541346.575	7.41				
155	434494.950	541352.588	17.73				
146	434504.586	541367.563	11.43				
116	434509.573	541377.856	29.58				
33	434520.828	541405.207	12.00				
25	434525.397	541416.309	16.05				
7	434530.577	541431.504	11.53				
270	434519.048	541431.259	11.53				
271	434507.791	541433.763	8.85				
14	434508.217	541424.928	9.54				
272	434507.975	541415.390	4.70				
273	434506.258	541410.963	3.67				
274	434505.715	541407.335	5.14				
275	434504.433	541402.359	3.13				
276	434502.904	541399.621	3.89				
277	434501.430	541395.241	6.02				
278	434499.790	541392.416	6.12				
119	434495.154	541386.461	5.93				
279	434491.496	541381.800	7.66				
151	434487.965	541374.984	7.47				
280	434484.263	541368.641	6.66				
281	434479.760	541363.541	5.47				
282	434477.796	541360.686	3.34				
167	434476.573	541357.576	6.32				
221	434476.096	541351.271	9.61				
283	434472.506	541342.243	3.04				
284	434471.800	541339.335	2.18				
239	434471.016	541337.343	5.20				
285	434468.115	541335.033	8.94				
286	434461.589	541326.915	4.08				
287	434460.340	541325.287	5.51				
288	434459.669	541326.702	5.42				
232	434475.047	541329.407	2.80				
230	434477.680	541330.316	3.09				

Suprafata teren = 547 mp.

SISTEM DE COORDONATE STEREO '70



SC TOPOMONT CONSULT SRL
CUI: 10612596, J28/1500/2004, RO28

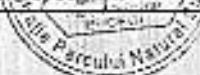
SUPORT TOPOGRAFIC
PENTRU OBTINEREA AUTORIZATIEI DE CONSTRUIRE

GEODEZ CU DREPT DE SEMNATURA
MIRICA-DAMIAN NICOLAE-ADRIAN
Certificat de autorizare nr. 807 din 29.02.2008.

scara 1: 500

BENEFICIAR :
ADMINISTRATIA PARCULUI NATURAL BUCEGI

Sinaia, Ghiocilor, 23, Prahova, cod 106100 Data: 11.2008



509.